




VIMALA HILLS  
VILLA & RESORT

PT PUTRA ADHI PRIMA

Marketing Gallery : Jl. Raya Puncak Simpang Gedog, Bogor - Jawa Barat  
0812 1111 7099 (0251) 824 9999  
www.vimalahills.com VimalaHills VIMALA\_HILLS


 **AGUNG PODOMORO LAND**



VIMALA HILLS  
VILLA & RESORT



**FIRST CLASS  
RESORT**

A misty forest of tall pine trees with a golden glow from the sun. The scene is serene and atmospheric, with the sun low on the horizon, creating a soft, golden light that filters through the mist and the tops of the trees. The trees are tall and slender, with dark green needles. The mist is thick and white, filling the air and obscuring the lower parts of the trees. The overall mood is peaceful and contemplative.

THE GOLDEN SKY AFTER DAWN  
AS I CLIMB THE HIGHER GROUND  
THE WARM RAY OF LIGHT.  
STARRING BETWEEN THE HIGHEST PEAKS  
TINGLING MY SENSES,  
AS IT FLICKERS ALONG THE SKIN

I'M DANCING MY WAY BACK HOME  
ACROSS THE GREEN GRASS,  
ALONG THE STONY TRAILS  
TO MY HOME, TO MY LIFE  
WHERE WARM, LOVE AND JOY  
KEEP ME ALIVE



YIMALA HILLS

 pullman  
HOTELS AND RESORTS

YIMALA HILLS

 pullman  
HOTELS AND RESORTS

bumi sampireun





## THE SPLENDOR OF NATURE

Discover the magnificence of nature at Vimala Hills, located 400-700 meters above sea level, Feel the cool breeze and stunning view of lush greenery and the three majestic mountains (Mount Gede Pangrango, Mount Salak & Mount Geulis). This tranquil sanctuary is located only 30 minutes from Cawang toll Jakarta (48 km) with convenient access.

## LIVE YOUR LIFE IN THE EMBRACES OF LOVE

Treasure your priceless moments with your loving family. On the higher grounds of Vimala Hills Villa & Resort, you will find soothing ambience of nature, offering you the best atmosphere to live your life in the warm embraces of your loved ones.



# MASTER PLAN

GEULIS MOUNTAIN

GEDE PANGRANGO MOUNTAIN



SALAK MOUNTAIN

**CLUSTER**

- 1. CLUSTER BROMO
- 2. CLUSTER PANGRANGO
- 3. CLUSTER SEMERU
- 4. CLUSTER RINJANI
- 5. CLUSTER ARGOPURO
- 6. CLUSTER KRAKATAU
- 7. CLUSTER KILIMANJARO
- 8. CLUSTER KINABALU
- 9. CLUSTER ALPEN
- 10. CLUSTER HIMALAYA
- 11. CLUSTER EVEREST

**FACILITIES**

- A. MAIN GATE
- B. FLOWER HILLS
- C. RABBIT & DEER PARK
- D. PULLMAN CIAWI
- E. CLUB HOUSE & VIMALA CLINIC
- F. BUMI SAMPIREUN
- G. HELICONIA GARDEN  
MINI ZOO & HORSE RIDE
- H. OUTBOUND & ATV TRACK
- I. CANOEING, AMPHITHEATER  
& FISHING POND
- J. HELIPAD
- K. HORSE RIDING



## OUR FACILITIES

RELISH THE EXCITEMENT OF  
DYNAMIC LIFE IN OUR VAST  
ARRAY OF FACILITIES, FROM  
FLOWER HILLS AND DEER PARK  
TO CLUB HOUSE FISHING POND  
AND VIMALA CLINIC

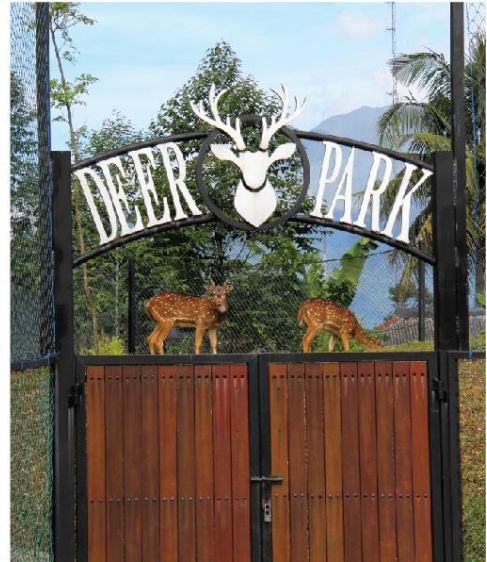




HELICONIA GARDEN

## THEME PARK

FLOWER HILLS  
RABBIT & DEER PARK  
HELICONIA GARDEN  
FISHING POND  
SUNFLOWER & BUTTERFLY GARDEN





## UNIQUE AMENITIES

CLUB HOUSE & VIMALA CLINIC  
OUTDOOR GYM, LAKE & RIVER  
PULLMAN HOTELS & RESORTS  
BUMI SAMPIREUN RESTO











## ADVENTURE LAND

- CAMPING GROUND
- CHILDREN PLAYLAND
- BICYCLE & JOGGING TRACK
- PADI PATH FIELD
- ATV TRACK
- CANOEING
- AMPHITHEATER

The first 5 star hotel in Ciawi area, Pullman Ciawi is located in the heart of Vimala Hills.

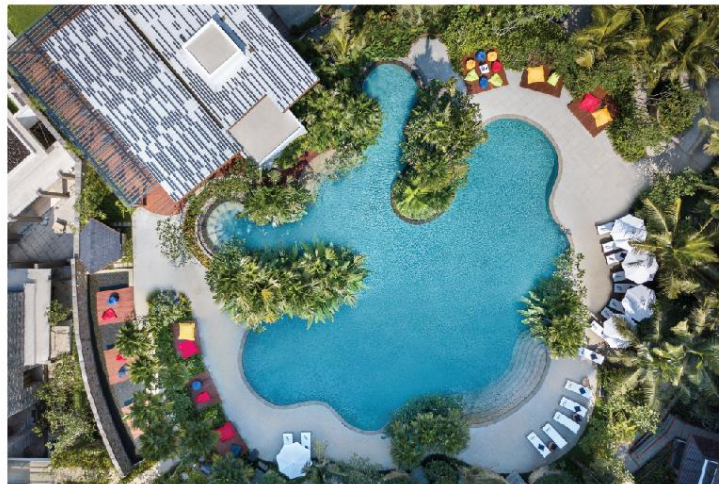
It's a relaxing getaway from the hustle and bustle of the hectic city life.

Discover a brand new approach for urban dwellers living a busy modern lifestyle  
to delight in the luxury and serenity surrounded by nature.

















SETTING EYES ON THE PEAK,  
ONLY A THING I CAN FATHOM.  
FROM WAY UP HERE,  
LIFE IS SO BEAUTIFUL



PREMIUM CLUSTER

# EVEREST

THE PINNACLE OF PRISTINE LIVING

Located at 600 meters above sea level. Step into the wonderful sights of nature and the cool breeze brushing through the trees. Experience the harmony of green lush landscapes and the majestic mountain view of Mount Gede Pangrango, Mount Salak & Mount Geulis. Everest comes with a New Concept, New Design & New Facilities. It's time to indulge in the gifts of nature and live your best life.





# Everest Site Plan





Type Unit





Surrounded by lush greenery and stunning mountain views creating an extraordinary living atmosphere. It's time to experience a new standard of living.

*New Concept*











Attention to detail, comfortable furnishings, stylish design, luxury and elegance are found in each and every villa. The villas are available with 3 bedrooms, 2 floors (mezzanine) and can be upgraded to 4 bedrooms.

*New Design*

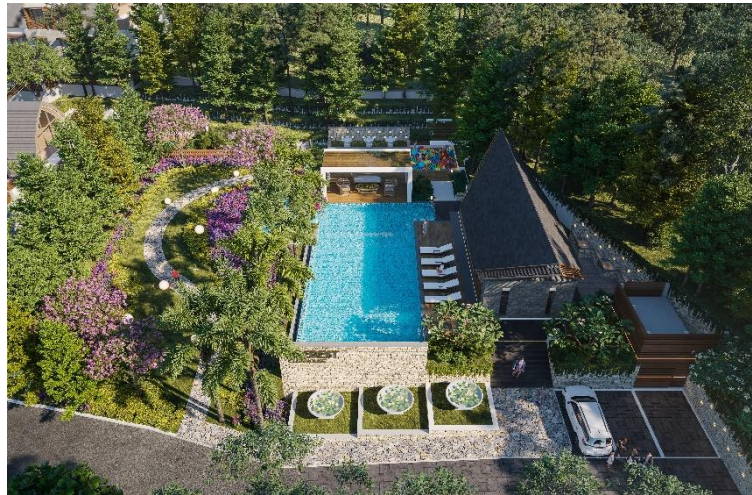




Encourage your adventurous side and cycle around the resort or workout at the outdoor gym. Practice daily yoga exercise at our Yoga garden, explore the river side jogging track, swim and relax in the private pool surrounded by clean fresh air to nourish your body and soul.

*New Facilities*

















Geulis Mountain View

Gede Mountain View



Cluster Everest

Pangrango Mountain View



Salak Mountain View





Geulis Mountain View



# SPECIFICATION

<b>FOUNDATION</b>	Mini Pile	<b>DOORS AND WINDOW SILLS</b>	
<b>WALL FINISHING</b>		<b>Main Door</b>	Solid Engineering Door
<b>Inner Walls</b>	Dulux Pentaltite / Mowilox / Equivalent	<b>Bedroom Door</b>	Engineering Door
<b>Outer Walls</b>	Dulux Weathershield / Mowilox / Equivalent	<b>Sills and Windows</b>	Aluminium with powder coating finishing
<b>ROOF</b>	Bitumen /Equivalent	<b>SANITAIR</b>	TOYO Premium
<b>PLAFOND</b>	Gypsum Board Metal Furring Full System Gypsum Board Water Resistant for toilet area	<b>INSTALLATION</b>	
<b>FLOORING</b>		<b>Clean Water</b>	PDAM / Equivalent
<b>Main Floor</b>	HT 60x60, ex Valentino Gress (Azio Light Gray)	<b>Electricity</b>	3500 VA
<b>Bedroom Floor</b>	Vynil ex Brawijaya Perkisa	<b>AC (excluding the unit)</b>	Each Bedroom (except the maid's bedroom) and Living Room
<b>Main Bathroom Floor</b>	HT 60x60, ex Valentino Gress (Robson Cenero)	<b>Others</b>	Telephone Network, TV
<b>Other Bathroom Floor</b>	HT 60x60, ex Valentino Gress (Robson Cenero)		
<b>Service Room Floor</b>	Ceramic 30x30		
<b>Balcony and Terrace Floor</b>	HT 60x60, ex Valentino Gress		
<b>Carport</b>	Paving Block, ex Cisanjkan / Conblock		

# LOCATION

Convenient location at the forefront of Puncak area (Ciawi) with easy access only 30 minutes (from toll road distance : Cawang - Jagorawi 48 km)





Agung Podomoro Land is one of the most famous property developers in Indonesia, known as the largest, trusted, reputable and experienced.

PT Agung Podomoro Land Tbk is established since 1969, and has become the main strength in Indonesia's property industry until today.

Agung Podomoro Land has received many awards as the reputable, trusted and credible developer.

Along with its subsidiary companies, Agung Podomoro Land is currently the leading property developer in Indonesia's property market.

Agung Podomoro Land has completed successful projects from real estate (villa, residential, apartment and town house), commercial (Mall and Shophouse), offices and Superblock.



## THE LARGEST & FASTEST GROWING DEVELOPER

More Than  
80 Projects

More Than  
50 Years  
Experience

King of Property  
Developer

*Indonesia Property & Bank Award*

More Than  
80 National  
& International  
Awards

TOP 10  
Developers 2017  
by BCI ASIA

Indonesia Most  
Admired Companies  
2019

*Warta Ekonomi Award*



## OUR CONSULTANT

**WATG**  
U.S.A

WIMBERLY, ALLISON, TONG & GOO  
Architect Consultant  
Entrance Gate & Pullman Hotel

**PERIDIAN**  
INTERNATIONAL LTD.

PERIDIAN ASIA  
Masterplan, Landscape &  
Hardscape Consultant  
Flower Hills, F&B Area

**LITAC**  
Lighting & Acoustic Consultant

LITAC  
Lighting Consultant

**OLSA** DESIGN INTERNATIONAL  
ARCHITECTURE | PLANNING | LANDSCAPE

OLSA DESIGN INTERNATIONAL  
Architect Consultant  
Unit Design

**Linea**marca

PT. LINEAMARCA DINAMIKA  
Landscape & Hardscape Consultant  
Flower Hills, F&B Area